

Mitchell EMC



The news
you need to
know in
5 minutes!

CAMILLA, GEORGIA
www.mitchellemc.com

Mitchell EMC Wins Grant to Expand Rural Broadband

Mitchell Electric Membership Corporation is a member owned Electric utility that has provided reliable electricity to rural Southwest Georgia since 1937. Our members, school systems, and local governments have expressed a need for reliable, high speed, broadband internet service.

As a cooperative, our mission and tradition is “to power communities and empower members to improve the quality of their lives.” We do this by providing services that are not readily available or by improving on our existing services. One of our “Seven Cooperatives Principles - Concern for Our Community” allows us to work with local & national leaders for the substantial development of the communities we serve.

The pandemic brought to light how great the need for reliable, high speed broadband internet service is in rural Southwest Georgia. Mitchell EMC President/CEO Tony Tucker, “Our rural members have long lacked, reliable high-speed internet access and as a commitment to the communities we serve, we will begin the process to serve these needs to our members and residents by delivering reliable and affordable broadband service.”

Mitchell EMC is partnering with Connect to launch and deploy a fiber-to-the-home network that could span up to 5,570 miles across its Southwest Georgia territory.

Conexon Connect, the internet service provider formed by rural fiber-optic network design and construction management leader Conexon, has been selected by Mitchell EMC to deliver high-speed fiber internet access for rural Georgians within the cooperative’s service territory. This agreement marks Conexon Connect’s ninth fiber-to-the-home project in Georgia.

The Connect, powered by Mitchell EMC, network will deliver world-class fiber broadband services to homes and businesses primarily in Baker, Dougherty,

Mitchell, and Worth counties, and in parts of Calhoun, Colquitt, Decatur, Early, Grady, Lee, Miller, Thomas, Tift and Turner counties. The goal is to ultimately expand fiber broadband access to all of Mitchell EMC’s 15,300+ members, if possible.

In January Six electric membership corporations learned that they would be receiving more than \$41 million in state grants to leverage investments the utilities are making to expand broadband service in six rural Georgia counties.

Gov. Brian Kemp announced the competitive grants as part of a \$234 million package from the Capital Projects Fund aimed at improving connectivity to all Georgians.

“High-speed internet access is critical for both academic and economic opportunities, as well as overall quality of life,” he said. “These projects announced today will go a long way to helping Georgians in some of the most unserved and underserved parts of the state become better connected.”

The fund is financed by monies from the American Rescue Plan Act passed by Congress in 2021. The Governor’s Office of Planning & Budget and the Georgia Technology Authority advised Kemp on the competitive grants that would help the most people in areas without internet service.

The EMCs receiving the latest grants include: Satilla Rural Electric Membership Corporation (Coffee Co.), Grady Electric Membership Corporation (Grady Co.), Mitchell Electric Membership Corporation (Mitchell Co. & Worth Co.), Irwin Electric Membership Corporation (Wilcox Co.), Middle Georgia Electric Membership Corporation (Wilcox Co.), and Oconee Electric Membership Corporation (Wilkinson Co.)

Construction will begin in January 2023, with the first members expected to be connected in May 2023. The project will take 3-4 years to complete.

10 Do's and Don'ts When Using Portable Generators

By Abby Berry

Storm season is upon us, which means greater potential for power outages. If you're planning to use a portable generator in the event of an outage, Mitchell EMC reminds you to play it safe.

With proper use and maintenance, portable generators can provide great convenience during an outage. However, when generators are used incorrectly, they can be extremely hazardous. In a 2022 report, the Consumer Product Safety Commission estimated 85 U.S. consumers die every year from carbon monoxide (CO) poisoning caused by gasoline-powered portable generators.

Here are 10 do's and don'ts to keep in mind when using portable generators:

- **DO:** Install backup CO alarms.
- **DO:** Keep children and pets



away from portable generators at all times.

- **DO:** Position generators at least 25 feet outside the home, away from doors, windows and vents that can allow CO to enter the home.

- **DO:** Ensure your generator is properly grounded. Use a portable ground fault circuit interrupter (GFCI) to prevent electric shock injuries.

- **DO:** Use three-pronged extension cords that are rated to handle the load of the generator.

Inspect extension cords for cuts, frays or other damage before use.

- **DON'T:** Operate a generator inside your home or an enclosed (or partially-enclosed) space. Generators produce high levels of CO, which can be deadly.

- **DON'T:** Open windows or doors while the generator is running.

- **DON'T:** Rely on generators as a full-time source of power. They should only be used temporarily or in emergency situations to power essential equipment or appliances.

- **DON'T:** Overload generators. They should only be used to power essential equipment. Make sure your generator can handle the load of the items you plan to power.

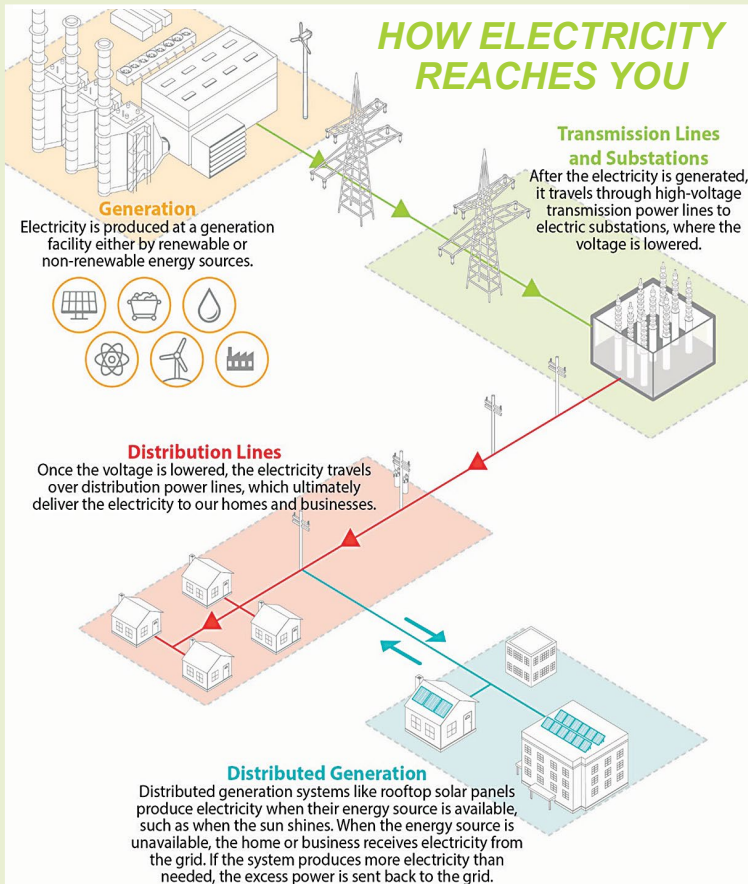
- **DON'T:** Connect generators directly into household wiring unless you have an appropriate transfer switch installed. If a generator is connected to a home's wiring without a transfer switch, power can backfeed along power lines and electrocute utility lineworkers making repairs.

While generators provide convenience during power outages, they can quickly become hazardous—even deadly—if improperly operated. Before you operate a portable generator, be sure to thoroughly read the owner's manual for important safety information and tips.

If you have questions about proper use of portable generators, we're here to help. Give us a call at 800-479-6034 or contact us at info@mitchellemc.com.

Abby Berry writes on consumer and cooperative affairs for the National Rural Electric Cooperative Association, the national trade association representing more than 900 local electric cooperatives. From growing suburbs to remote farming communities, electric co-ops serve as engines of economic development for 42 million Americans across 56% of the nation's landscape.

HOW ELECTRICITY REACHES YOU



86th Annual Meeting of the Members of Mitchell EMC

The 86th Annual Meeting of the Members of Mitchell EMC will be on Friday, April 21, 2023, at the EMC headquarters in Camilla. Watch your mailbox for your registration card and more details.

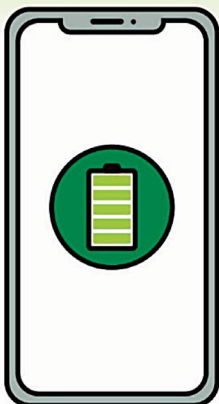
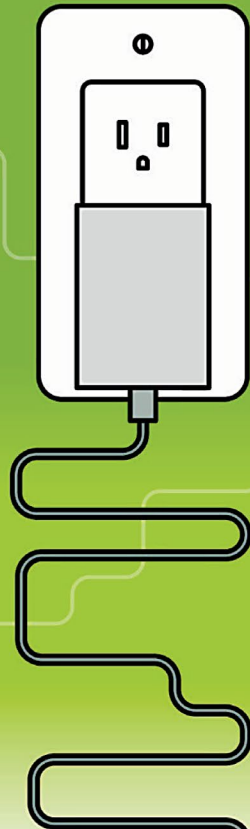
ELECTRONICS EFFICIENCY WORD SEARCH

Did you know there are ways you can reduce your electronics energy use?

Read the energy-saving tips below, then find and circle the **bolded** words in the puzzle.



| | | | | | | | | | | | | | | |
|---|---|---|---|---|---|---|---|---|---|---|---|---|---|---|
| B | J | C | M | G | S | N | A | M | O | R | S | W | U | L |
| R | A | F | O | D | V | T | L | L | P | D | I | O | S | W |
| E | B | T | E | M | V | C | E | U | X | S | Y | W | D | G |
| C | B | P | T | D | P | O | W | E | R | S | T | R | I | P |
| H | Y | G | M | E | T | U | A | U | Y | H | Z | P | U | Z |
| A | R | P | Q | E | R | U | T | L | R | N | Z | N | U | Y |
| R | F | I | H | L | V | I | C | E | Q | V | P | C | E | S |
| G | T | D | F | F | W | K | E | M | R | L | B | N | H | O |
| E | B | H | W | C | F | Q | W | S | U | K | Y | N | Z | M |
| A | Q | I | L | I | F | K | N | G | L | O | I | K | B | A |
| B | S | R | E | G | R | A | H | C | E | N | O | H | P | C |
| L | N | O | Y | O | V | I | M | A | I | V | I | R | X | T |
| E | V | S | U | A | I | L | K | O | L | U | Y | N | F | C |
| Y | H | V | K | S | L | F | G | T | R | I | P | B | T | G |
| P | O | W | E | R | M | A | N | A | G | E | M | E | N | T |



- Use a **power strip** with an on/off switch when powering multiple electronics to easily manage energy use.
- For devices that require **batteries**, use **rechargeable** ones, which are more cost-effective and environmentally friendly.
- **Unplug** electronic products that consume energy even when they're not in use, like **phone chargers**.
- Use the sleep or **power management** mode on your **computer** to save on energy costs.



Serving in 14 Southwest Georgia Counties...

Operation RoundUp Scholarship

Due To the Community Foundation of South Georgia By: MARCH 1, 2023

What better way to invest in the future than by investing in the outstanding youth of our communities? Mitchell EMC Members who enroll in Operation Round-Up are doing exactly that by providing scholarships to deserving students. Participating members allow us to round their electric bills up to the nearest whole dollar amount. Though it may not seem like much, those funds



added together make a huge positive difference in our local community.

A maximum of ten (10) renewable scholarships will be awarded on an annual basis. Scholarships will be \$2,500 per semester, twice a year, for up to four years to assist in attaining an undergraduate degree from a post-secondary institution in the United States. After the first Semester, the monies for subsequent semesters will be issued provided that students have submitted prior semester grades to verify they have maintained a minimum GPA of 2.5 and continue to be enrolled as a full-time student.

Applicants must be a graduating high school senior, or a student currently enrolled in or attending

a post-secondary college, technical college, or university in the United States, and that has attained at least a 2.5 GPA. The applicant, their parent(s), or legal guardian(s) must have their primary residence or a place of business in the Mitchell EMC Service Area. Preference will be given to Mitchell EMC consumers. However, further consideration will be given based on financial need, academic achievement, extracurricular school activities or employment, community service, and leadership qualities.

Applications are available at: The Community Foundation of South Georgia, P.O.Box 2654, Thomasville, Ga. 31799 or visit our website for application. Please do not alter the original application. Incomplete applications or applications received AFTER the due date of March 1st will NOT be considered. Applications must be submitted to the Community Foundation of South Georgia.

Please note that the scholarships have different deadlines and should be mailed to different addresses listed on the scholarship form. We encourage students to apply for both scholarships. Applications will be judged by an independent scholarship committee, and winners will be notified by May 1.

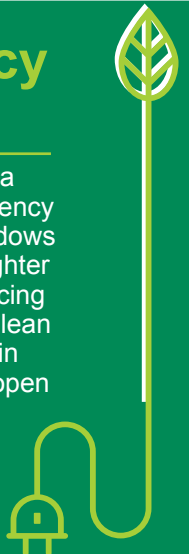
ARE YOU READY TO SPRING FORWARD?



MARCH 12, 2023

Energy Efficiency Tip of the Month

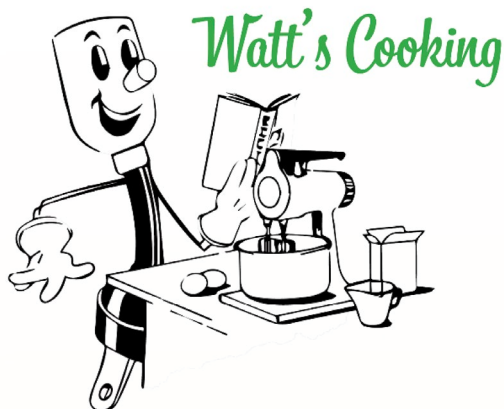
Washing windows and screens is a great way to practice energy efficiency during spring cleaning. Clean windows and screens make your home brighter by allowing more sunlight in, reducing the need for lamps and fixtures. Clean screens also allow more fresh air in the home when the windows are open to recycle indoor air. Natural light and clean air are energy savers, and they enhance overall health and productivity. *Source: energy.gov*



Note: If you move or no longer have electric service with Mitchell EMC, it is important that members keep their address current, so that future disbursements can be properly mailed. Capital credits are reserved for members even if they move out of the Mitchell EMC service area. Mitchell EMC will make a diligent effort to send a check by mail.

Statement of Equal Employment Opportunity

All applications for employment shall be considered and hired on the basis of merit, without regard to race, color, religion, sex (including pregnancy), age, national origin, disability, genetic information, or past or present military status. The employment practices shall ensure equal treatment of all employees, without discrimination as to promotion, discharge, rates of pay, fringe benefits, job training, classification, referral, and other aspects of employment, on the basis of race, color, religion, sex (including pregnancy), national origin, disability, age, genetic information, or past or present military status. M/F/V/DV/D



Vidalia Onion Pie

Ingredients

1 cup Ritz or saltine cracker crumbs
6 tablespoons melted butter, separated
3 cups of thinly sliced Vidalia onions
2 eggs
3/4 cup of milk
3/4 teaspoon salt; pinch of pepper
1/2 cup grated cheddar cheese (or other cheese)

Directions

Mix cracker crumbs with 4 tablespoons melted butter. Press into a 9- or 10-inch pie plate. Saute onions with 2 tablespoons of butter until onions are soft and translucent. Spoon on top of pie crust. Beat eggs with milk, salt, and pepper and pour over onion. Sprinkle with cheese. Bake at 350° for 30 to 40 minutes until firm in the center.

Submitted by:

Barbara Lapham, Mitchell County

Share & Win!

Send us your favorite quick and easy dinner recipes. If your recipe is chosen for print, you can win a

\$25 credit

on your next Mitchell EMC bill.

Send recipes to: Heather Greene, P.O.
Box 409, Camilla, GA 31730 or email to
heather.greene@mitchellemc.com.